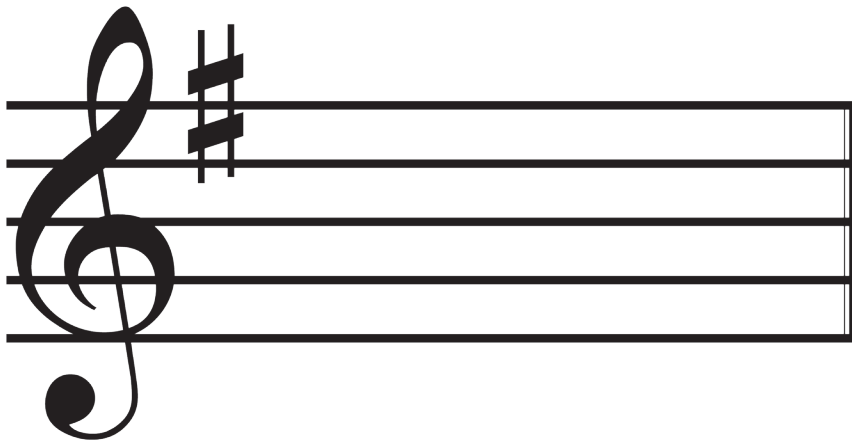


Evanston Violin Studio - Matthew Cataldi

C-Major
or
a-minor

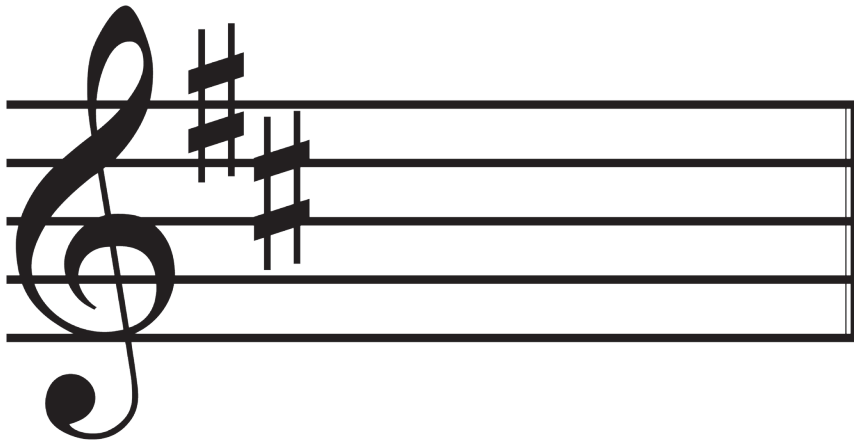
No Sharps
No Flats



Evanston Violin Studio - Matthew Cataldi

G-Major
or
e-minor

1 Sharp
(F#)
No Flats



Evanston Violin Studio - Matthew Cataldi

D-Major
or
b-minor

2 Sharps

(F[#], C[#])

No Flats



Evanston Violin Studio - Matthew Cataldi

A-Major

or

f[#]-minor

3 Sharps

(F[#], C[#], G[#])

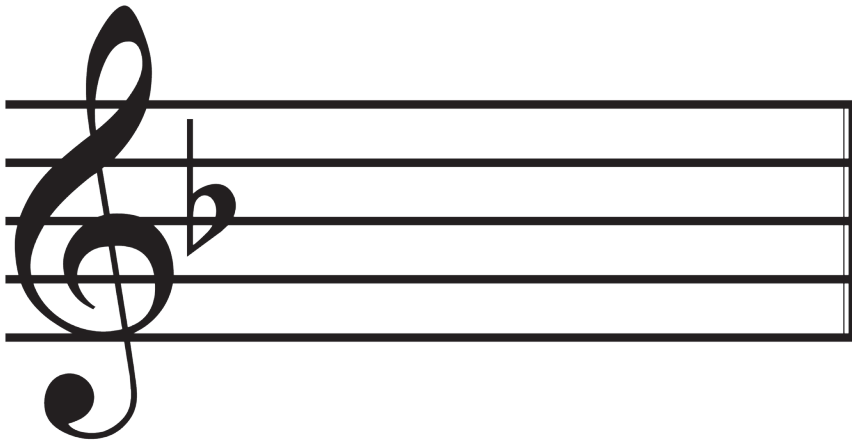
No Flats



Evanston Violin Studio - Matthew Cataldi

E-Major
or
c[#]-minor

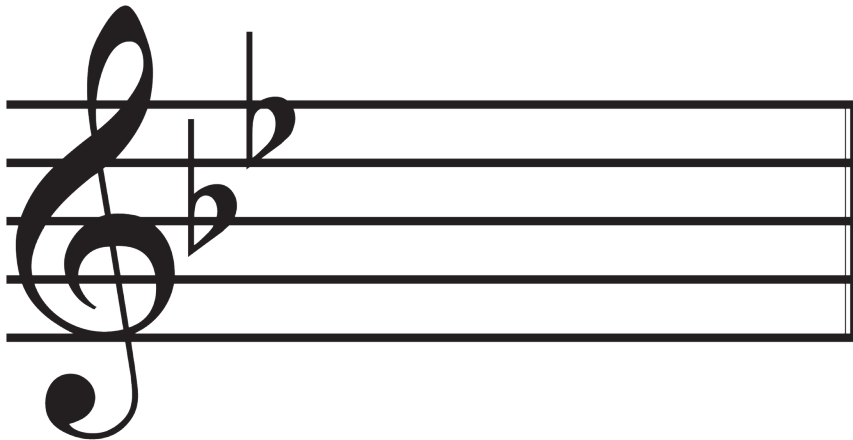
4 Sharps
(F[#], C[#], G[#], D[#])
No Flats



Evanston Violin Studio - Matthew Cataldi

F-Major
or
d-minor

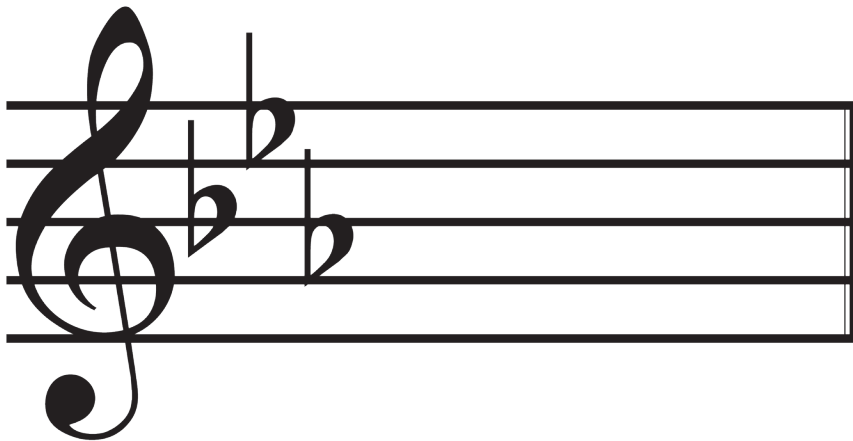
No Sharps
1 Flat
(B^b)



Evanston Violin Studio - Matthew Cataldi

B^b-Major
or
g-minor

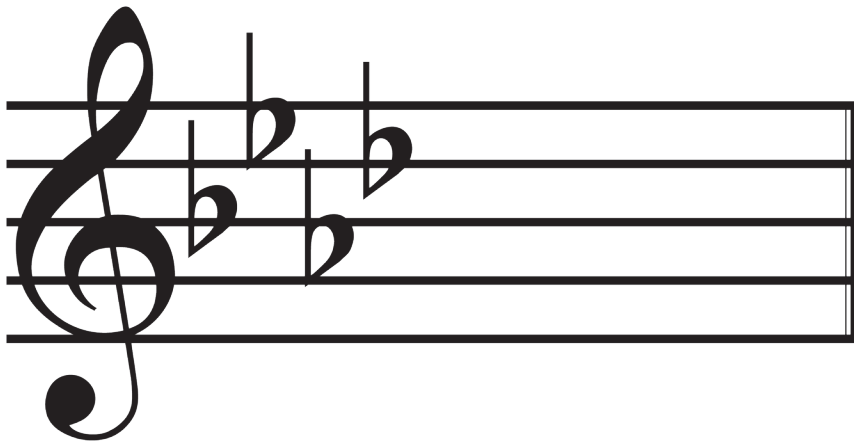
No Sharps
2 Flats
(B^b, E^b)



Evanston Violin Studio - Matthew Cataldi

E^b -Major
or
c-minor

No Sharps
3 Flats
(B^b , E^b , A^b)



Evanston Violin Studio - Matthew Cataldi

A^b-Major
or
f-minor

No Sharps
4 Flats
(B^b, E^b, A^b, D^b)